

3U Video Wall Controller

DMC9000-3U



Features

- FPGA architecture and Uniview's core image processing strategy provide excellent image processing performance. Embedded Linux OS ensures 24/7 stable operation and protects the device from hackers and viruses.
- Plug-in design for boards provides flexible board application and makes the upgrade, expansion and maintenance of the system easier.
- Advanced PCIe switching chip in the industry. Each signal has a dedicated transmission channel, which ensures the real-time display of images of all signals. And a service board can be inserted into any service board slot, which allows users to apply boards flexibly.
- Resolution Real-time Total Adaptation technology. Each device supports sixteen video walls with different resolutions, and the resolution can be customized.
- Supports window opening, roaming and zooming at any position on the video wall. The unique video processing algorithm ensures that the image quality is not affected during zooming.
- Supports "Picture-in-Picture" mode, which allows users to watch videos on top of other windows, presenting flexible layouts.
- Supports saving the video wall layout as a scene, so that the layout can be used at any time later. Up to 64 scenes can be saved. Supports scene sequence.
- Intelligent temperature control design of fans keeps the heat dissipation and noise at an ideal level, and ensures the noise is no more than 30 dBA in conference rooms.
- Intelligently monitors board power supply and board temperature. When abnormal board power supply or temperature is detected, the board will automatically shut down to safeguard device operation.
- Supports custom EDID, allowing users to customize the resolution of input video sources.
- Supports small pixel pitch LED displays.
- Supports connecting up to 5 board enclosures.
- Support virtual LED.

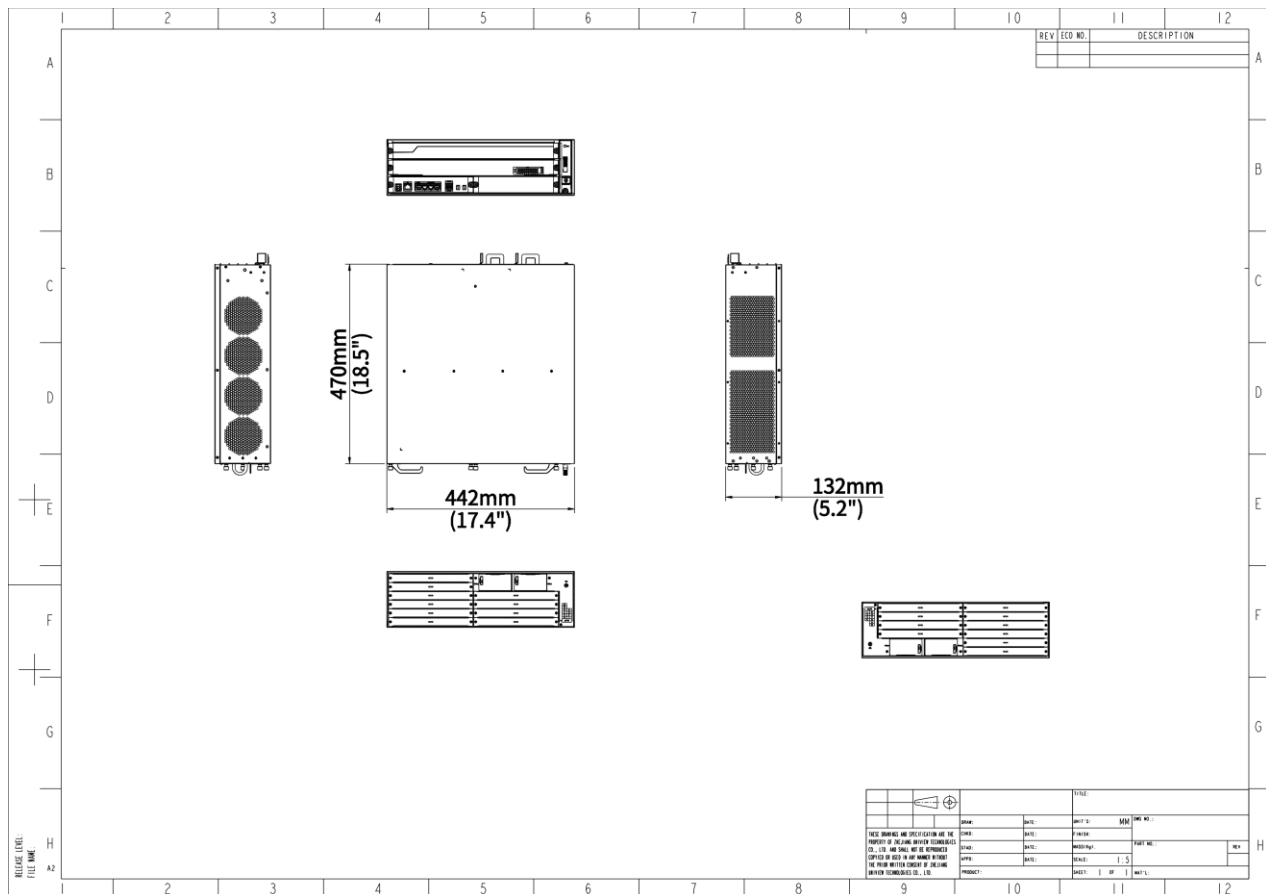
- Support video pre monitoring echo.

Specifications

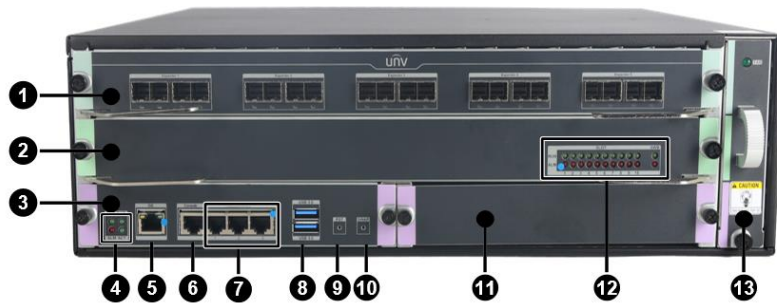
Model	DMC9000-3U
Output	
Output Board Type	4-ch HDMI, 8-ch HDMI, 2-ch HDMI(4K), 4-ch DVI-D
Input	
Input Board Type	4-ch HDMI, 8-ch HDMI, 2-ch HDMI(4K), 4-ch DVI-D
General	
Product Dimensions (W x H x D) (mm)	447 x 471 x 132
Package Dimensions (W x H x D) (mm)	630 x 630 x 232
Weight (Kg)	Net Weight: 14.1 Gross Weight: 14.4
Full-loaded Consumption (W)	<350
Service Board Slots	10
Mixed Insertion	Support
Control Board Interface	1 x network interface, 1 x Console serial interface, 3 x RS232/RS485 serial interface, 2 x USB interface, 1 x RST key, 1 x SWAP Hot-swappable key
Power Supply	100 V ~ 240 V AC; 50 Hz/60 Hz
Operating Temperature	0°C ~ 50°C
Operating Humidity	0% ~ 90% (No condensation)
Storage Temperature	-40°C ~ 70°C
Storage Humidity	0% ~ 95% (No condensation)
Screen Control	
Roam and Overlay	The windows can roam at any position on the video wall. Supports window overlay. Supports picture-in-picture mode.
Number of Windows	Each output interface can open 8 windows on average. The window opening resources of all output interfaces can be shared. Up to 32 windows are allowed for each output interface.
One-click Layout	One-click to create a video wall with an M x N layout or fixed layout.
Multiple Video Walls	Each device can create and manage four video walls with different configurations.

Scene Management	Up to 64 scenes can be saved.
Advanced	
Signal Delay	<100ms
Output Sync	Fully synchronized
Power Failure Protection	When the device is accidentally powered off, the current running services and layout will be retained and restored after restart.
Seamless Switching	Support
Cascade	Supports connecting up to 5 board enclosures.
Virtual LED	16 (static)

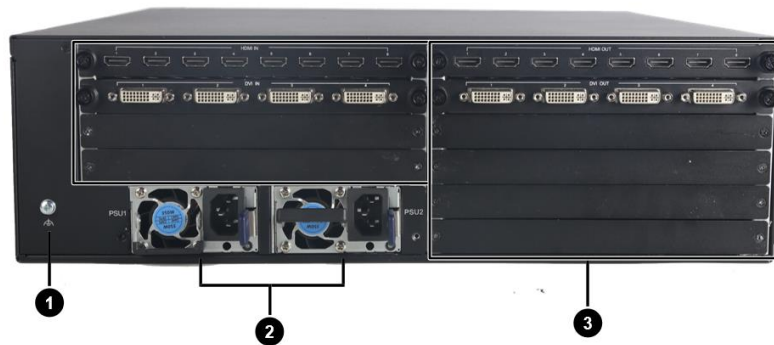
Dimensions



Interface



1: Cascade board (fixed slot, no mixed insertion)(optional)	2: Switch board (fixed slot, no mixed insertion)
3: Control board	4: Status indicator (RUN, ALM, PWR, ACT)
5: Network interface, 10M/100M/1000M Base-T adaptive Ethernet interface	6: Serial interface
7: RS232/RS485	8: USB 3.0 interface
9: RST key: Press this key to reset the system. Press and hold this key for more than 5 seconds to restore the factory settings.	10: SWAP key: Press this key to switch the active control board to a standby control board.
11: Redundant control board slot (only one control board is allowed for each controller)	12: Switch board/Service board status indicator
13: Fan	



1: Grounding terminal	2: Power
3: Service board slot (10 slots, supports mixed insertion)	



1: Switch board (fixed slot, no mixed insertion)	2: Cascade interface
3: Switch board/Service board status indicator	4: Fan

Ordering Information for Optional Accessories

Model	Remarks
FB-SC90-3U	3U Video Wall Controller Cascade Unit(10 Service Board Slots, Exchange Board)
FB-SC90-MCU	3U Video Wall Controller Master Cascade Unit
PWR-AC1229A-NB	3U Video Wall Controller 350W AC Power

FB-SC90-02UH-X-NB	2-Port Video Wall Controller HDMI-4K Video Output Board Module
FB-SC90-04DI-X-NB	4-Port Video Wall Controller DVI Video Output Board Module
FB-SC90-04HI-E-NB	4-Port Video Wall Controller HDMI Video Input Board Module
FB-SC90-08HI-E-NB	8-Port Video Wall Controller HDMI Video Input Board Module
FB-SC90-02UH-E-NB	2-Port Video Wall Controller HDMI-4K Video Input Board Module
FB-SC90-04DI-E-NB	4-Port Video Wall Controller DVI Video Input Board Module
FB-SC90-04HI-X-NB	4-Port Video Wall Controller HDMI Video Output Board Module
FB-SC90-08HI-X-NB	8-Port Video Wall Controller HDMI Video Output Board Module
FB-SC90-04HI-PX-NB	4-Port Video Wall Controller HDMI Video Pre Monitoring Echo Output Board

Ordering Info

Product Model	Description
DMC9000-3U	3U Video Wall Controller

Zhejiang Uniview Technologies Co., Ltd.

No. 369, Xietong Road, Xixing Sub-district, Binjiang District, Hangzhou City, 310051, Zhejiang Province, China (Zhejiang) Pilot Free Trade Zone, China

Email: overseasbusiness@uniview.com; globalsupport@uniview.com

<http://www.uniview.com>

©2023-2025 Zhejiang Uniview Technologies Co., Ltd. All rights reserved.

*Product specifications and availability are subject to change without notice.

*Despite our best efforts, technical or typographical errors may exist in this document. Uniview cannot be held responsible for any such errors and reserves the right to change the contents of this document without prior notice.